

## Test Report

No.: SZXEC24001521906

Date: May 23, 2024

Page 1 of 10

Client Name: SHENZHEN JDT FUSE INDUSTRIAL CO., LTD.

Client Address: 5/F, BUILDING 23, LONGBI INDUSTRIAL ZONE, BANTIAN STREET, LONGGANG DISTRICT, SHENZHEN

Sample Name: Glass Fuse(JFG5F2100N)

Model No.: JFG5F2100N

Client Ref. Information: Please see attachments

The above sample(s) and information were provided by the client.

SGS Job No.: SZP24-020763

Sample Receiving Date: May 15, 2024

Testing Period: May 15, 2024 ~ May 21, 2024

Test Requested: Select test(s) as requested by the client.

Test Method(s): Please refer to next page(s).

Test Result(s): Please refer to next page(s).

Test Requirement	Conclusion
Lead, Mercury, Cadmium, Hexavalent chromium, Polybrominated biphenyls (PBB), Polybrominated diphenyl ethers (PBDE), Bis(2-ethylhexyl) phthalate (DEHP), Butyl benzyl phthalate (BBP), Dibutyl phthalate (DBP) and Diisobutyl phthalate (DIBP)	See Results

Signed for and on behalf of  
SGS-CSTC Standards Technical Services Co., Ltd. Shenzhen Branch

Fay

Fay Yuan  
Approved Signatory

scan to see the report



DFAC197E



SGS-CSTC Standards Technical Services Co., Ltd.  
Shenzhen Branch Testing & Inspection Laboratory

Unless otherwise agreed in writing, this document is issued by the Company subject to its General Conditions of Service printed overleaf, available on request or accessible at <http://www.sgs.com/en/Terms-and-Conditions.aspx> and, for electronic format documents, subject to Terms and Conditions for Electronic Documents at <http://www.sgs.com/en/Terms-and-Conditions/Terms-e-Documents.aspx>. Attention is drawn to the limitation of liability, indemnification and jurisdiction issues defined therein. Any holder of this document is advised that information contained hereon reflects the Company's findings at the time of its intervention only and within the limits of Client's instructions, if any. The Company's sole responsibility is to its Client and this document does not exonerate parties to a transaction from exercising all their rights and obligations under the transaction documents. This document cannot be reproduced except in full, without prior written approval of the Company. Any unauthorized alteration, forgery or falsification of the content or appearance of this document is unlawful and offenders may be prosecuted to the fullest extent of the law. Unless otherwise stated the results shown in this test report refer only to the sample(s) tested.

Attention: To check the authenticity of testing /inspection report & certificate, please contact us at telephone: (86-755) 8307 1443, or email: [CN.Doccheck@sgs.com](mailto:CN.Doccheck@sgs.com)

Room 101-901, Plant 4 & Room 101, Plant 2 & Room 101, Plant 3 & Room 301-501, Plant 3, Jianghao (Bantian) Industrial Plant Area, No. 430, Jihua Road, Bantian Community, Bantian Street, Longgang District, Shenzhen, Guangdong, China 518129 [www.sgs.com](http://www.sgs.com)  
中国·广东·深圳市龙岗区坂田街道坂田社区吉华路430号江源(坂田)工业厂区厂房4号101-901、2号101、3号101、3号301-501 邮编:518129 t(86-755)25328888 [sgs.china@sgs.com](mailto:sgs.china@sgs.com)

# Test Report

No.: SZXEC24001521906

Date: May 23, 2024

Page 2 of 10

## Test Result(s):

### Test Part Description:

SN ID	Sample No.	SGS Sample ID	Description
SN1	A2	SZX24-0015219-0001.C002	"Glass Fuse(JFG5F2100N)"(mixed)

### Remarks:

- (1) 1 mg/kg = 1 ppm = 0.0001%
- (2) MDL = Method Detection Limit
- (3) ND = Not Detected (< MDL)
- (4) "-" = Not Regulated

**Lead, Mercury, Cadmium, Hexavalent chromium, Polybrominated biphenyls (PBB), Polybrominated diphenyl ethers (PBDE), Bis(2-ethylhexyl) phthalate (DEHP), Butyl benzyl phthalate (BBP), Dibutyl phthalate (DBP) and Diisobutyl phthalate (DIBP)**

Test Method: With reference to IEC 62321-4:2013+AMD1:2017, IEC 62321-5:2013, IEC 62321-7-2:2017, IEC 62321-6:2015 and IEC 62321-8:2017, analysis was performed by ICP-OES/AAS, UV-Vis and GC-MS.

Test Item(s)	Unit(s)	MDL	A2
Lead (Pb)	mg/kg	2	33
Mercury (Hg)	mg/kg	2	ND
Cadmium (Cd)	mg/kg	2	ND
Hexavalent Chromium (Cr(VI))	mg/kg	8	ND
Polybromobiphenyl (PBB)	mg/kg	-	ND
Monobrominated biphenyl (MonoBB)	mg/kg	5	ND
Dibrominated biphenyl (DiBB)	mg/kg	5	ND
Tribrominated biphenyl (TriBB)	mg/kg	5	ND
Tetrabrominated biphenyl (TetraBB)	mg/kg	5	ND
Pentabrominated biphenyl (PentaBB)	mg/kg	5	ND
Hexabrominated biphenyl (HexaBB)	mg/kg	5	ND
Heptabrominated biphenyl (HeptaBB)	mg/kg	5	ND
Octabrominated biphenyl (OctaBB)	mg/kg	5	ND
Nonabrominated biphenyl (NonaBB)	mg/kg	5	ND
Decabrominated biphenyl (DecaBB)	mg/kg	5	ND
Polybromodiphenyl ether(PBDE)	mg/kg	-	ND
Monobrominated diphenyl ether (MonoBDE)	mg/kg	5	ND
Dibrominated diphenyl ether (DiBDE)	mg/kg	5	ND
Tribrominated diphenyl ether (TriBDE)	mg/kg	5	ND
Tetrabrominated diphenyl ether (TetraBDE)	mg/kg	5	ND
Pentabrominated diphenyl ether (PentaBDE)	mg/kg	5	ND
Hexabrominated diphenyl ether (HexaBDE)	mg/kg	5	ND
Heptabrominated diphenyl ether (HeptaBDE)	mg/kg	5	ND
Octabrominated diphenyl ether (OctaBDE)	mg/kg	5	ND



SGS-CTC Standards Technical Services Co., Ltd.  
Shenzhen Branch Testing Center-Chemical Laboratory

Unless otherwise agreed in writing, this document is issued by the Company subject to its General Conditions of Service printed overleaf, available on request or accessible at <http://www.sgs.com/en/Terms-and-Conditions.aspx> and, for electronic format documents, subject to Terms and Conditions for Electronic Documents at <http://www.sgs.com/en/Terms-and-Conditions/Terms-e-Documents.aspx>. Attention is drawn to the limitation of liability, indemnification and jurisdiction issues defined therein. Any holder of this document is advised that information contained hereon reflects the Company's findings at the time of its intervention only and within the limits of Client's instructions, if any. The Company's sole responsibility is to its Client and this document does not exonerate parties to a transaction from exercising all their rights and obligations under the transaction documents. This document cannot be reproduced except in full, without prior written approval of the Company. Any unauthorized alteration, forgery or falsification of the content or appearance of this document is unlawful and offenders may be prosecuted to the fullest extent of the law. Unless otherwise stated the results shown in this test report refer only to the sample(s) tested.

Attention: To check the authenticity of testing /inspection report & certificate, please contact us at telephone: (86-755) 8307 1443, or email: [CN.Doccheck@sgs.com](mailto:CN.Doccheck@sgs.com)

Room 101-901, Plant 4 & Room 101, Plant 2 & Room 101, Plant 3 & Room 301-501, Plant 3, Jianghao (Bantian) Industrial Plant Area, No. 430, Jihua Road, Bantian Community, Bantian Street, Longgang District, Shenzhen, Guangdong, China 518129 [www.sgs.com](http://www.sgs.com)  
中国·广东·深圳市龙岗区坂田街道坂田社区吉华路430号江灏(坂田)工业区厂房4号101-901、2号101、3号301-501 邮编:518129 t:(86-755) 25328888 [sgs.china@sgs.com](mailto:sgs.china@sgs.com)

# Test Report

No.: SZXEC24001521906

Date: May 23, 2024

Page 3 of 10

Test Item(s)	Unit(s)	MDL	A2
Nonabrominated diphenyl ether (NonaBDE)	mg/kg	5	ND
Decabrominated diphenyl ether (DecaBDE)	mg/kg	5	ND
Bis-(2-ethylhexyl) Phthalate(DEHP)	mg/kg	50	ND
Benzyl Butyl Phthalate(BBP)	mg/kg	50	ND
Dibutyl Phthalate(DBP)	mg/kg	50	ND
Diisobutyl Phthalate(DIBP)	mg/kg	50	ND

Remark: The sample(s) was/were analyzed on behalf of the applicant as mixing sample in one testing. The above result(s) was/were only given as the informality value and only for reference.

Unless otherwise stated, the decision rule for conformity reporting is based on Binary Statement for Simple Acceptance Rule ( $w=0$ ) stated in ILAC-G8:09/2019.



Unless otherwise agreed in writing, this document is issued by the Company subject to its General Conditions of Service printed overleaf, available on request or accessible at <http://www.sgs.com/en/Terms-and-Conditions.aspx> and, for electronic format documents, subject to Terms and Conditions for Electronic Documents at <http://www.sgs.com/en/Terms-and-Conditions/Terms-e-Documents.aspx>. Attention is drawn to the limitation of liability, indemnification and jurisdiction issues defined therein. Any holder of this document is advised that information contained hereon reflects the Company's findings at the time of its intervention only and within the limits of Client's instructions, if any. The Company's sole responsibility is to its Client and this document does not exonerate parties to a transaction from exercising all their rights and obligations under the transaction documents. This document cannot be reproduced except in full, without prior written approval of the Company. Any unauthorized alteration, forgery or falsification of the content or appearance of this document is unlawful and offenders may be prosecuted to the fullest extent of the law. Unless otherwise stated the results shown in this test report refer only to the sample(s) tested.

Attention: To check the authenticity of testing /inspection report & certificate, please contact us at telephone: (86-755) 8307 1443, or email: [CN.Doccheck@sgs.com](mailto:CN.Doccheck@sgs.com)

SGS-CTS Standards Technical Services Co., Ltd.  
Shenzhen Branch Testing Center-Chemical Laboratory

Room 101-901, Plant 4 & Room 101, Plant 2 & Room 101, Plant 3 & Room 301-501, Plant 3, Jiangheo (Banlian) Industrial Plant Area, No. 430, Jihua Road, Banlian Community, Banlian Street, Longgang District, Shenzhen, Guangdong, China 518129 [www.sgs.com](http://www.sgs.com)  
中国·广东·深圳市龙岗区坂田街道坂田社区吉华路430号江源(坂田)工业厂区厂房4号101-901、2号101、3号101、3号301-501 邮编:518129 t:(86-755)25328888 [sgs.china@sgs.com](mailto:sgs.china@sgs.com)

### Elements Testing Flow Chart

These samples were dissolved totally by pre-conditioning method according to below flow chart.



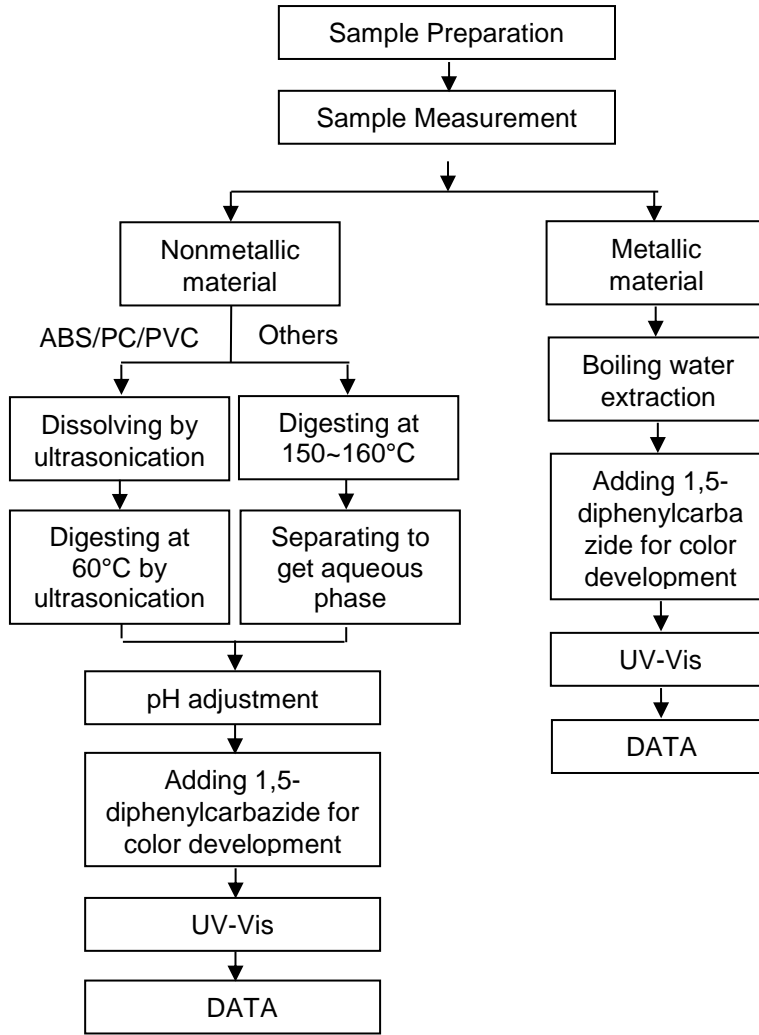
Unless otherwise agreed in writing, this document is issued by the Company subject to its General Conditions of Service printed overleaf, available on request or accessible at <http://www.sgs.com/en/Terms-and-Conditions.aspx> and, for electronic format documents, subject to Terms and Conditions for Electronic Documents at <http://www.sgs.com/en/Terms-and-Conditions/Terms-e-Documents.aspx>. Attention is drawn to the limitation of liability, indemnification and jurisdiction issues defined therein. Any holder of this document is advised that information contained hereon reflects the Company's findings at the time of its intervention only and within the limits of Client's instructions, if any. The Company's sole responsibility is to its Client and this document does not exonerate parties to a transaction from exercising all their rights and obligations under the transaction documents. This document cannot be reproduced except in full, without prior written approval of the Company. Any unauthorized alteration, forgery or falsification of the content or appearance of this document is unlawful and offenders may be prosecuted to the fullest extent of the law. Unless otherwise stated the results shown in this test report refer only to the sample(s) tested.

**Attention: To check the authenticity of testing /inspection report & certificate, please contact us at telephone: (86-755) 8307 1443, or email: [CN.Doccheck@sgs.com](mailto:CN.Doccheck@sgs.com)**

SGS-CSI Standards Technical Services Co., Ltd.  
Shenzhen Branch Testing Center Chemical Laboratory

Room 101-901, Plant 4 & Room 101, Plant 2 & Room 101, Plant 3 & Room 301-501, Plant 3, Jianghao (Banlian) Industrial Plant Area, No. 430, Jihua Road, Banlian Community, Banlian Street, Longgang District, Shenzhen, Guangdong, China 518129 [www.sgs.com](http://www.sgs.com)  
中国·广东·深圳市龙岗区坂田街道坂田社区吉华路430号江灏(坂田)工业区厂房4号101-901、2号101、3号301-501 邮编:518129 t:(86-755)25328888 [sgs.china@sgs.com](mailto:sgs.china@sgs.com)

**Hexavalent Chromium (Cr(VI)) Testing Flow Chart**



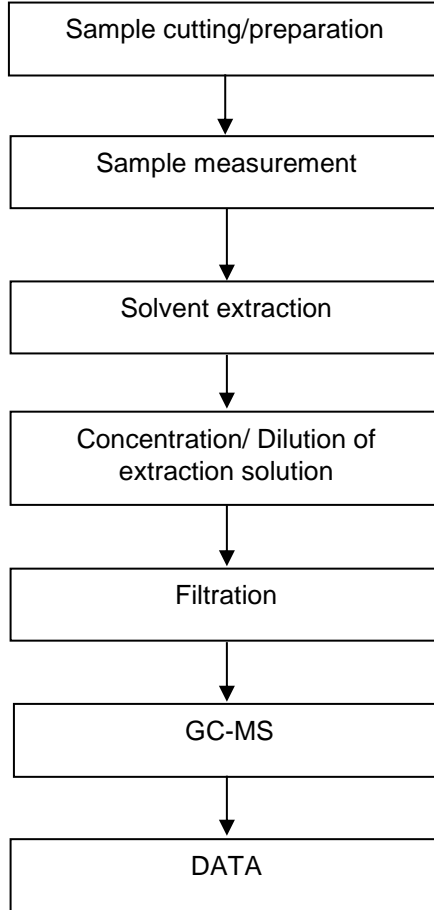
Unless otherwise agreed in writing, this document is issued by the Company subject to its General Conditions of Service printed overleaf, available on request or accessible at <http://www.sgs.com/en/Terms-and-Conditions.aspx> and, for electronic format documents, subject to Terms and Conditions for Electronic Documents at <http://www.sgs.com/en/Terms-and-Conditions/Terms-e-Documents.aspx>. Attention is drawn to the limitation of liability, indemnification and jurisdiction issues defined therein. Any holder of this document is advised that information contained hereon reflects the Company's findings at the time of its intervention only and within the limits of Client's instructions, if any. The Company's sole responsibility is to its Client and this document does not exonerate parties to a transaction from exercising all their rights and obligations under the transaction documents. This document cannot be reproduced except in full, without prior written approval of the Company. Any unauthorized alteration, forgery or falsification of the content or appearance of this document is unlawful and offenders may be prosecuted to the fullest extent of the law. Unless otherwise stated the results shown in this test report refer only to the sample(s) tested.

**Attention: To check the authenticity of testing /inspection report & certificate, please contact us at telephone: (86-755) 8307 1443, or email: CN.Doccheck@sgs.com**

SGS-CSTC Standards Technical Services Co., Ltd.  
Shenzhen Branch Testing Center Chemical Laboratory

Room 101-901, Plant 4 & Room 101, Plant 2 & Room 101, Plant 3 & Room 301-501, Plant 3, Jianghao (Banlian) Industrial Plant Area, No. 430, Jihua Road, Banlian Community, Banlian Street, Longgang District, Shenzhen, Guangdong, China 518129 www.sgs.com.cn  
中国·广东·深圳市龙岗区坂田街道坂田社区吉华路430号江灏(坂田)工业区厂房4号101-901、2号101、3号101、3号301-501 邮编:518129 t:(86-755) 25328888 sgs.china@sgs.com

### PBB/PBDE Testing Flow Chart



Unless otherwise agreed in writing, this document is issued by the Company subject to its General Conditions of Service printed overleaf, available on request or accessible at <http://www.sgs.com/en/Terms-and-Conditions.aspx> and, for electronic format documents, subject to Terms and Conditions for Electronic Documents at <http://www.sgs.com/en/Terms-and-Conditions/Terms-e-Documents.aspx>. Attention is drawn to the limitation of liability, indemnification and jurisdiction issues defined therein. Any holder of this document is advised that information contained hereon reflects the Company's findings at the time of its intervention only and within the limits of Client's instructions, if any. The Company's sole responsibility is to its Client and this document does not exonerate parties to a transaction from exercising all their rights and obligations under the transaction documents. This document cannot be reproduced except in full, without prior written approval of the Company. Any unauthorized alteration, forgery or falsification of the content or appearance of this document is unlawful and offenders may be prosecuted to the fullest extent of the law. Unless otherwise stated the results shown in this test report refer only to the sample(s) tested.

**Attention: To check the authenticity of testing /inspection report & certificate, please contact us at telephone: (86-755) 8307 1443, or email: [CN.Doccheck@sgs.com](mailto:CN.Doccheck@sgs.com)**

SGS-CSTC Standards Technical Services Co., Ltd.  
Shenzhen Branch Testing Center Chemical Laboratory

Room 101-901, Plant 4 & Room 101, Plant 2 & Room 101, Plant 3 & Room 301-501, Plant 3, Jianghao (Banlian) Industrial Plant Area, No. 430, Jihua Road, Banlian Community, Banlian Street, Longgang District, Shenzhen, Guangdong, China 518129 [www.sgs.com](http://www.sgs.com)  
中国·广东·深圳市龙岗区坂田街道坂田社区吉华路430号江源(坂田)工业区厂房4号101-901、2号101、3号301-501 邮编:518129 t:(86-755) 25328888 [sgs.china@sgs.com](mailto:sgs.china@sgs.com)

### Phthalates Testing Flow Chart



Unless otherwise agreed in writing, this document is issued by the Company subject to its General Conditions of Service printed overleaf, available on request or accessible at <http://www.sgs.com/en/Terms-and-Conditions.aspx> and, for electronic format documents, subject to Terms and Conditions for Electronic Documents at <http://www.sgs.com/en/Terms-and-Conditions/Terms-e-Documents.aspx>. Attention is drawn to the limitation of liability, indemnification and jurisdiction issues defined therein. Any holder of this document is advised that information contained hereon reflects the Company's findings at the time of its intervention only and within the limits of Client's instructions, if any. The Company's sole responsibility is to its Client and this document does not exonerate parties to a transaction from exercising all their rights and obligations under the transaction documents. This document cannot be reproduced except in full, without prior written approval of the Company. Any unauthorized alteration, forgery or falsification of the content or appearance of this document is unlawful and offenders may be prosecuted to the fullest extent of the law. Unless otherwise stated the results shown in this test report refer only to the sample(s) tested.

**Attention: To check the authenticity of testing /inspection report & certificate, please contact us at telephone: (86-755) 8307 1443, or email: [CN.Doccheck@sgs.com](mailto:CN.Doccheck@sgs.com)**

## Test Report

No.: SZXEC24001521906

Date: May 23, 2024

Page 8 of 10

Attachment:

JFG3F0125L/JFG3F0125N/JFG3T1160N/JFG5F0100L/JFG5F0100N/JFG5F0250L/JFG5F0250N/  
JFG5T0100L/JFG5T0100N/JFG5T0250L/JFG5T0250N/JFG6F0100N/JFG6F0300L/JFG6F0300N/  
JFG6F2150N/JFG6T0100L/JFG6T0100N/JFG6T0300L/JFG6T0300N/JFG6T2150L/JFG3F0050L/  
JFG3F0050N/JFG3F0063L/JFG3F0063N/JFG3F0080L/JFG3F0080N/JFG3F0100L/JFG3F0100N/  
JFG3F0160L/JFG3F0160N/JFG3F0200L/JFG3F0200N/JFG3F0250L/JFG3F0250N/JFG3F0300L/  
JFG3F0300N/JFG3F0315L/JFG3F0315N/JFG3F0350L/JFG3F0350N/JFG3F0400L/JFG3F0400N/  
JFG3F0500L/JFG3F0500N/JFG3F0630L/JFG3F0630N/JFG3F0750L/JFG3F0750N/JFG3F0800L/  
JFG3F0800N/JFG3F1100L/JFG3F1100N/JFG3F1125L/JFG3F1125N/JFG3F1150L/JFG3F1150N/  
JFG3F1160L/JFG3F1160N/JFG3F1200L/JFG3F1200N/JFG3F1250L/JFG3F1250N/JFG3F1300L/  
JFG3F1300N/JFG3F1315L/JFG3F1315N/JFG3F1350L/JFG3F1350N/JFG3F1400L/JFG3F1400N/  
JFG3F1500L/JFG3F1500N/JFG3F1600L/JFG3F1600N/JFG3F1630L/JFG3F1630N/JFG3F1700L/  
JFG3F1700N/JFG3F1800L/JFG3F1800N/JFG3F2100L/JFG3F2100N/JFG3F2160L/JFG3F2160N/  
JFG3F2200L/JFG3F2200N/JFG3F2250L/JFG3F2250N/JFG3F2300N/JFG3T0100L/JFG3T0100N/  
JFG3T0125L/JFG3T0125N/JFG3T0160L/JFG3T0160N/JFG3T0200L/JFG3T0200N/JFG3T0250L/  
JFG3T0250N/JFG3T0300L/JFG3T0300N/JFG3T0315L/JFG3T0315N/JFG3T0350L/JFG3T0350N/  
JFG3T0400L/JFG3T0400N/JFG3T0500L/JFG3T0500N/JFG3T0630L/JFG3T0630N/JFG3T0750L/  
JFG3T0750N/JFG3T0800L/JFG3T0800N/JFG3T1100L/JFG3T1100N/JFG3T1125L/JFG3T1125N/  
JFG3T1150L/JFG3T1150N/JFG3T1160L/JFG3T1200L/JFG3T1200N/JFG3T1250L/JFG3T1250N/  
JFG3T1300L/JFG3T1300N/JFG3T1315L/JFG3T1315N/JFG3T1350L/JFG3T1350N/JFG3T1400L/  
JFG3T1400N/JFG3T1500L/JFG3T1500N/JFG3T1600L/JFG3T1600N/JFG3T1630L/JFG3T1630N/  
JFG3T1700L/JFG3T1700N/JFG3T1800L/JFG3T1800N/JFG3T2100L/JFG3T2100N/JFG3T2120L/  
JFG3T2120N/JFG3T2150L/JFG3T2150N/JFG3T2160L/JFG3T2160N/JFG3T2200L/JFG3T2200N/  
JFG3T2250L/JFG3T2250N/JFG3T2300L/JFG3T2300N/JFG5F0100N/JFG5F0125L/JFG5F0125N/  
JFG5F0160L/JFG5F0160N/JFG5F0200L/JFG5F0200N/JFG5F0250N/JFG5F0300L/JFG5F0300N/  
JFG5F0315L/JFG5F0315N/JFG5F0350L/JFG5F0350N/JFG5F0400L/JFG5F0400N/JFG5F0500L/  
JFG5F0500N/JFG5F0600L/JFG5F0600N/JFG5F0630L/JFG5F0630N/JFG5F0750L/JFG5F0750N/  
JFG5F0800L/JFG5F0800N/JFG5F1100L/JFG5F1100N/JFG5F1125L/JFG5F1125N/JFG5F1150L/  
JFG5F1150N/JFG5F1160L/JFG5F1160N/JFG5F1200L/JFG5F1200N/JFG5F1250L/JFG5F1250N/  
JFG5F1300L/JFG5F1300N/JFG5F1315L/JFG5F1315N/JFG5F1350L/JFG5F1350N/JFG5F1400L/  
JFG5F1400N/JFG5F1500L/JFG5F1500N/JFG5F1600L/JFG5F1600N/JFG5F1630L/JFG5F1630N/  
JFG5F1700L/JFG5F1700N/JFG5F1800L/JFG5F1800N/JFG5F2100L/JFG5F2100N/JFG5F2120L/  
JFG5F2120N/JFG5F2150L/JFG5F2150N/JFG5F2160L/JFG5F2160N/JFG5F2200L/JFG5F2200N/  
JFG5F2250L/JFG5F2250N/JFG5F2300L/JFG5F2300N/JFG5T0100N/JFG5T0125L/JFG5T0125N/  
JFG5T0160L/JFG5T0160N/JFG5T0200L/JFG5T0200N/JFG5T0250N/JFG5T0300L/JFG5T0300N/  
JFG5T0315L/JFG5T0315N/JFG5T0350L/JFG5T0350N/JFG5T0400L/JFG5T0400N/JFG5T0500L/  
JFG5T0500N/JFG5T0630L/JFG5T0630N/JFG5T0750L/JFG5T0750N/JFG5T0800L/JFG5T0800N/  
JFG5T1100L/JFG5T1100N/JFG5T1125L/JFG5T1125N/JFG5T1150L/JFG5T1150N/JFG5T1160L/  
JFG5T1160N/JFG5T1200L/JFG5T1200N/JFG5T1250L/JFG5T1250N/JFG5T1300L/JFG5T1300N/  
JFG5T1315L/JFG5T1315N/JFG5T1350L/JFG5T1350N/JFG5T1400L/JFG5T1400N/JFG5T1500L/  
JFG5T1500N/JFG5T1600L/JFG5T1600N/JFG5T1630L/JFG5T1630N/JFG5T1700L/JFG5T1700N/  
JFG5T1800L/JFG5T1800N/JFG5T2100L/JFG5T2100N/JFG5T2120L/JFG5T2120N/JFG5T2150L/  
JFG5T2150N/JFG5T2160L/JFG5T2160N/JFG5T2200L/JFG5T2200N/JFG5T2250L/JFG5T2250N/  
JFG5T2300L/JFG5T2300N/JFG6F0100L/JFG6F0160L/JFG6F0160N/JFG6F0200L/JFG6F0200N/  
JFG6F0250L/JFG6F0250N/JFG6F0315L/JFG6F0315N/JFG6F0350L/JFG6F0350N/JFG6F0400L/  
JFG6F0400N/JFG6F0500L/JFG6F0500N/JFG6F0630L/JFG6F0630N/JFG6F0750L/JFG6F0750N/  
JFG6F0800L/JFG6F0800N/JFG6F1100L/JFG6F1100N/JFG6F1125L/JFG6F1125N/JFG6F1150L/  
JFG6F1150N/JFG6F1160L/JFG6F1160N/JFG6F1200L/JFG6F1200N/JFG6F1250L/JFG6F1250N/  
JFG6F1300L/JFG6F1300N/JFG6F1315L/JFG6F1315N/JFG6F1350L/JFG6F1350N/JFG6F1400L/  
JFG6F1400N/JFG6F1500L/JFG6F1500N/JFG6F1600L/JFG6F1600N/JFG6F1630L/JFG6F1630N/  
JFG6F1700N/JFG6F1800L/JFG6F1800N/JFG6F2100L/JFG6F2100N/JFG6F2120L/JFG6F2120N/  
JFG6F2150L/JFG6F2150N/JFG6F2200L/JFG6F2200N/JFG6F2250L/JFG6F2250N/JFG6F2300L



SGS-CSTC Shenzhen Branch Inspection & Testing Services Co., Ltd.  
Shenzhen Branch Testing Center Chemical Laboratory

Unless otherwise agreed in writing, this document is issued by the Company subject to its General Conditions of Service printed overleaf, available on request or accessible at <http://www.sgs.com/en/Terms-and-Conditions.aspx> and, for electronic format documents, subject to Terms and Conditions for Electronic Documents at <http://www.sgs.com/en/Terms-and-Conditions/Terms-e-Documents.aspx>. Attention is drawn to the limitation of liability, indemnification and jurisdiction issues defined therein. Any holder of this document is advised that information contained hereon reflects the Company's findings at the time of its intervention only and within the limits of Client's instructions, if any. The Company's sole responsibility is to its Client and this document does not exonerate parties to a transaction from exercising all their rights and obligations under the transaction documents. This document cannot be reproduced except in full, without prior written approval of the Company. Any unauthorized alteration, forgery or falsification of the content or appearance of this document is unlawful and offenders may be prosecuted to the fullest extent of the law. Unless otherwise stated the results shown in this test report refer only to the sample(s) tested.

Attention: To check the authenticity of testing/inspection report & certificate, please contact us at telephone: (86-755) 8307 1443, or email: [CN.Doccheck@sgs.com](mailto:CN.Doccheck@sgs.com)

Room 101-901, Plant 4 & Room 101, Plant 2 & Room 101, Plant 3 & Room 301-501, Plant 3, Jianghao (Bantian) Industrial Plant Area, No. 430, Jihua Road, Bantian Community, Bantian Street, Longgang District, Shenzhen, Guangdong, China 518129 [www.sgs.com](http://www.sgs.com)  
中国·广东·深圳市龙岗区坂田街道坂田社区吉华路430号江灏(坂田)工业厂区厂房4号101-901、2号101、3号101、3号301-501 邮编:518129 t (86-755) 25328888 [sgs.china@sgs.com](mailto:sgs.china@sgs.com)



## Test Report

No.: SZXEC24001521906

Date: May 23, 2024

Page 9 of 10

JFG6F2300N/JFG6T0160L/JFG6T0160N/JFG6T0200L/JFG6T0200N/JFG6T0250L/JFG6T0250N/  
JFG6T0315L/JFG6T0315N/JFG6T0350L/JFG6T0350N/JFG6T0400L/JFG6T0400N/JFG6T0500L/  
JFG6T0500N/JFG6T0630L/JFG6T0630N/JFG6T0750L/JFG6T0750N/JFG6T0800L/JFG6T0800N/  
JFG6T1100L/JFG6T1100N/JFG6T1125L/JFG6T1125N/JFG6T1150L/JFG6T1150N/JFG6T1160L/  
JFG6T1160N/JFG6T1200L/JFG6T1200N/JFG6T1250L/JFG6T1250N/JFG6T1300L/JFG6T1300N/  
JFG6T1315L/JFG6T1315N/JFG6T1350L/JFG6T1350N/JFG6T1400L/JFG6T1400N/JFG6T1500L/  
JFG6T1500N/JFG6T1600L/JFG6T1600N/JFG6T1630L/JFG6T1630N/JFG6T1800L/JFG6T1800N/  
JFG6T2100L/JFG6T2100N/JFG6T2120L/JFG6T2120N/JFG6T2150N/JFG6T2200L/JFG6T2200N/  
JFG6T2250L/JFG6T2250N/JFG6T2300L/JFG6T2300N/JFGT50750N



SGS-CSTC Standards Technical Services Co., Ltd.  
Shenzhen Branch Testing Center-Chemical Laboratory

Unless otherwise agreed in writing, this document is issued by the Company subject to its General Conditions of Service printed overleaf, available on request or accessible at <http://www.sgs.com/en/Terms-and-Conditions.aspx> and, for electronic format documents, subject to Terms and Conditions for Electronic Documents at <http://www.sgs.com/en/Terms-and-Conditions/Terms-e-Documents.aspx>. Attention is drawn to the limitation of liability, indemnification and jurisdiction issues defined therein. Any holder of this document is advised that information contained hereon reflects the Company's findings at the time of its intervention only and within the limits of Client's instructions, if any. The Company's sole responsibility is to its Client and this document does not exonerate parties to a transaction from exercising all their rights and obligations under the transaction documents. This document cannot be reproduced except in full, without prior written approval of the Company. Any unauthorized alteration, forgery or falsification of the content or appearance of this document is unlawful and offenders may be prosecuted to the fullest extent of the law. Unless otherwise stated the results shown in this test report refer only to the sample(s) tested.

Attention: To check the authenticity of testing /inspection report & certificate, please contact us at telephone: (86-755) 8307 1443, or email: [CN.Doccheck@sgs.com](mailto:CN.Doccheck@sgs.com)

Room 101-901, Plant 4 & Room 101, Plant 2 & Room 101, Plant 3 & Room 301-501, Plant 3, Jiangheo (Banian) Industrial Plant Area, No. 430, Jihua Road, Banian Community, Banian Street, Longgang District, Shenzhen, Guangdong, China 518129 [www.sgs.com](http://www.sgs.com)  
中国·广东·深圳市龙岗区坂田街道坂田社区吉华路430号江源(坂田)工业区厂房4号101-901、2号101、3号101、3号301-501 邮编:518129 t(86-755) 25328888 [sgs.china@sgs.com](mailto:sgs.china@sgs.com)

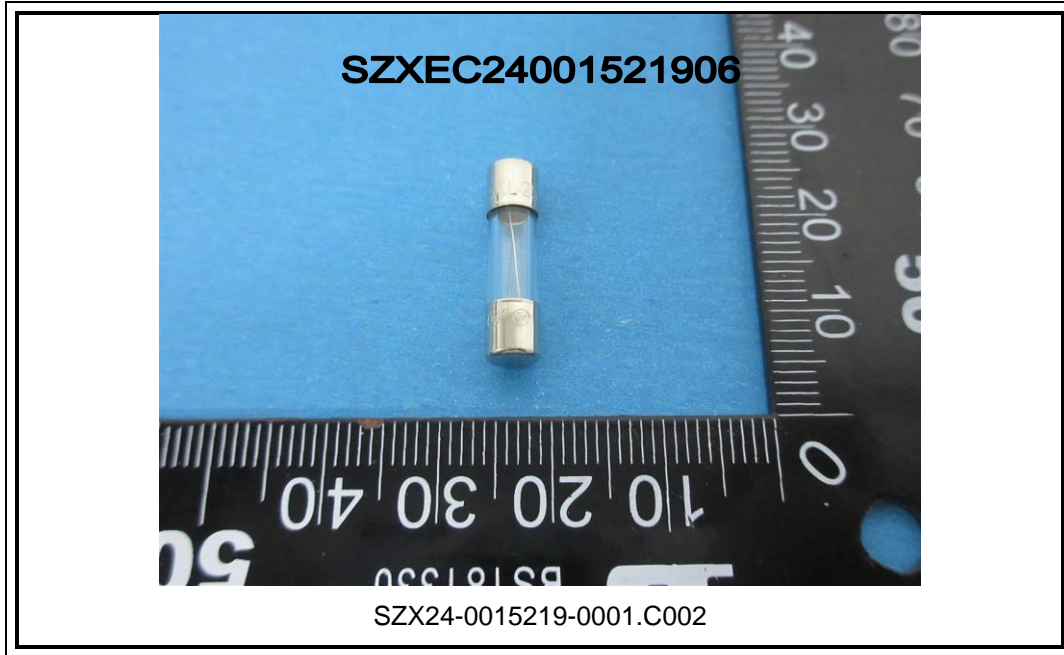
## Test Report

No.: SZXEC24001521906

Date: May 23, 2024

Page 10 of 10

### Sample Photo:



SGS authenticate the photo on original report only  
\*\*\* End of Report \*\*\*



Unless otherwise agreed in writing, this document is issued by the Company subject to its General Conditions of Service printed overleaf, available on request or accessible at <http://www.sgs.com/en/Terms-and-Conditions.aspx> and, for electronic format documents, subject to Terms and Conditions for Electronic Documents at <http://www.sgs.com/en/Terms-and-Conditions/Terms-e-Documents.aspx>. Attention is drawn to the limitation of liability, indemnification and jurisdiction issues defined therein. Any holder of this document is advised that information contained hereon reflects the Company's findings at the time of its intervention only and within the limits of Client's instructions, if any. The Company's sole responsibility is to its Client and this document does not exonerate parties to a transaction from exercising all their rights and obligations under the transaction documents. This document cannot be reproduced except in full, without prior written approval of the Company. Any unauthorized alteration, forgery or falsification of the content or appearance of this document is unlawful and offenders may be prosecuted to the fullest extent of the law. Unless otherwise stated the results shown in this test report refer only to the sample(s) tested.

**Attention: To check the authenticity of testing /inspection report & certificate, please contact us at telephone: (86-755) 8307 1443, or email: CN.Doccheck@sgs.com**

SGS-CSTC Standards Technical Services Co., Ltd.  
Shenzhen Branch Testing Center Chemical Laboratory

Room 101-901, Plant 4 & Room 101, Plant 2 & Room 101, Plant 3 & Room 301-501, Plant 3, Jiangheo (Banian) Industrial Plant Area, No. 430, Jihua Road, Banian Community, Banian Street, Longgang District, Shenzhen, Guangdong, China 518129 www.sgs.com.cn  
中国·广东·深圳市龙岗区坂田街道坂田社区吉华路430号江源(坂田)工业区厂房4号101-901、2号101、3号301-501 邮编:518129 t:(86-755) 25328888 sgs.china@sgs.com